

# Health Psychology Research Group: Breast cancer survey, online

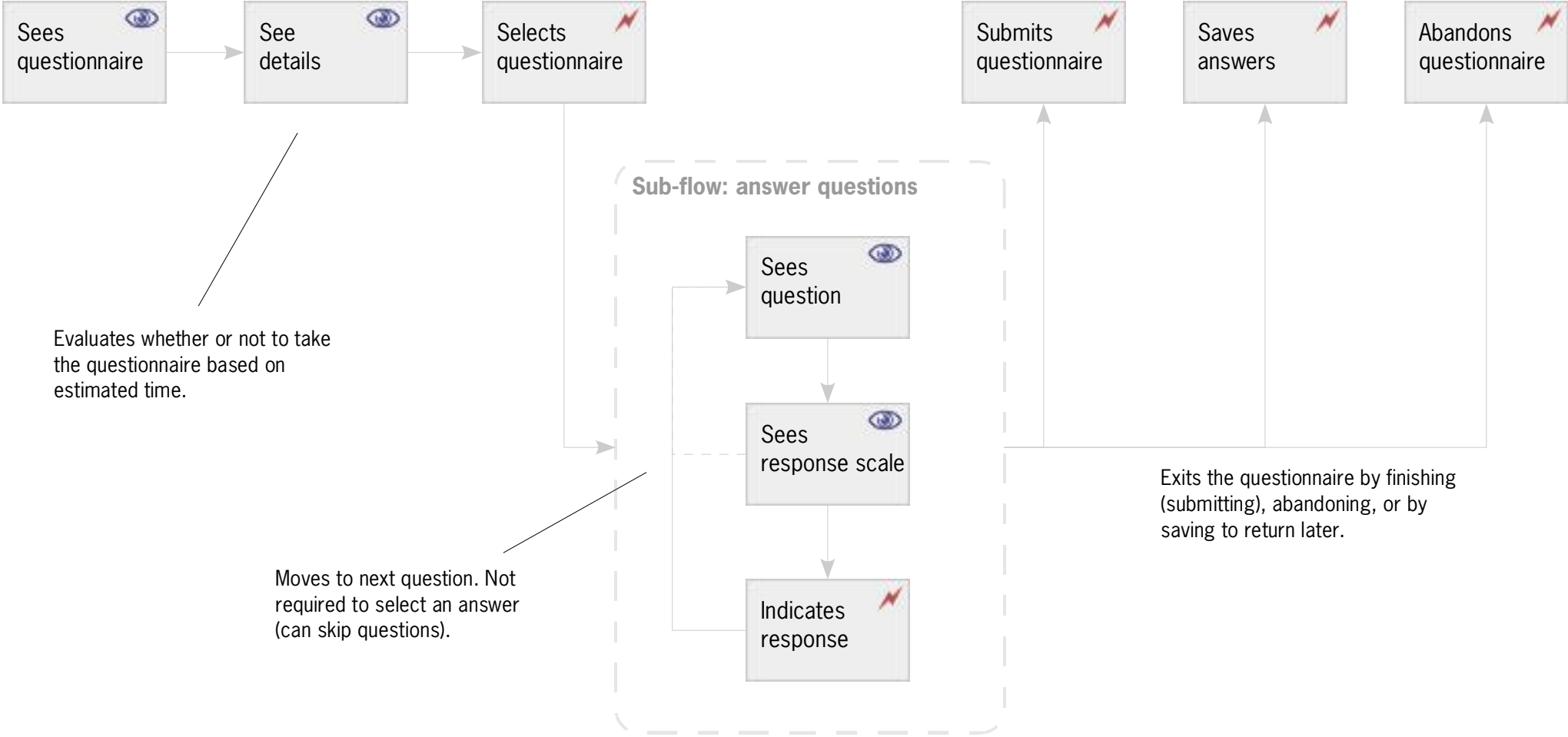
## Task flow: Complete questionnaire

### Sub-flow: Answer questions

**User group:**  
Survey participants

- Insights:**
1. Users view and respond to three sets of information: questionnaires, questions, and scales.
  2. User can leave the questionnaire at any time.
  3. User can skip questions for three reasons: they don't understand the question; they don't want to answer the question; they don't have an answer to the question **now**.

- Data the user communicates:**
1. User's answer or non-answer for each question.
  2. User is done with the questionnaire.



Evaluates whether or not to take the questionnaire based on estimated time.

Moves to next question. Not required to select an answer (can skip questions).

Exits the questionnaire by finishing (submitting), abandoning, or by saving to return later.

**Task flow legend**

- Task
- Direction of task flow
- Sub-flow, collection of sub-tasks
- 👁 Passive tasks
- ⚡ Active tasks